

About Us

We are recognized as a start-up by the Department of Industrial Promotion and Policy; and have worked with renowned organizations like Nanyang Technology University, University of West Indies, Innovative Hydrology, and World Business Council for Sustainable Development (WBCSD), Belize Social Investment Fund, and various Government departments and bodies.

GISFY PRIVATE LIMITED

Phoenix Tech Towers

Uppal, Hyderabad, Telangana

+91-9971777963

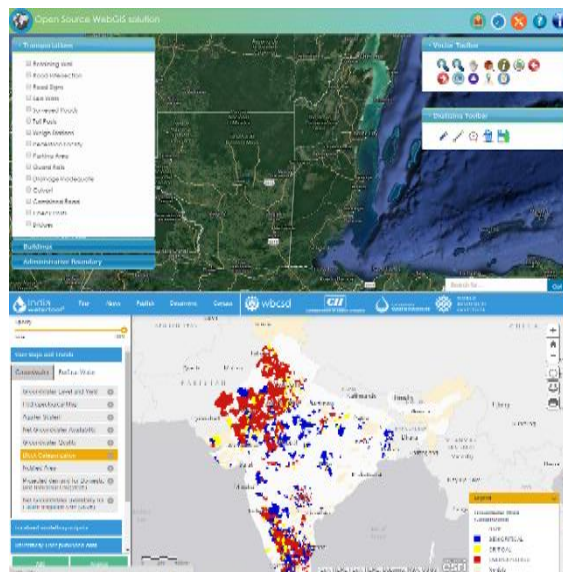
azghar@gisfy.co.in



GISFY PRIVATE LIMITED

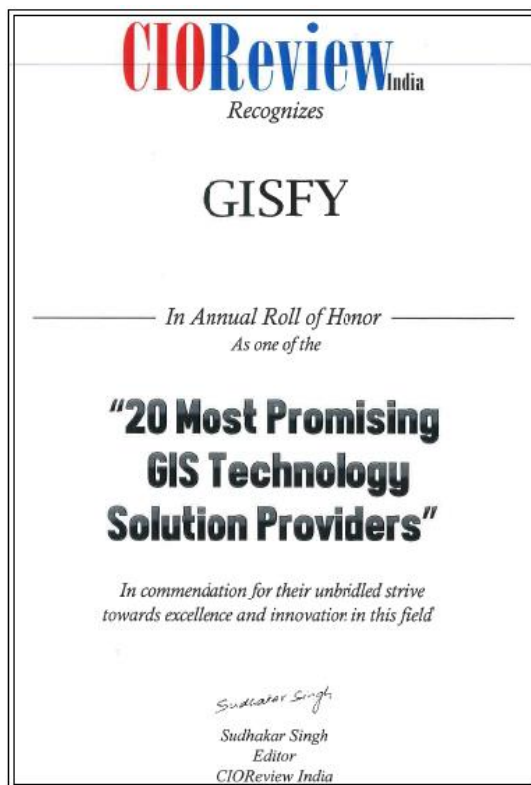
Product/Service Information

www.gisfy.co.in



COMPETENCY

GISFY's core competency lies in providing solutions across the entire software value chain - from data creation, conversion, and enhancement to software development, modeling, analytics, and consulting. The ability to offer complete solutions, comprising data, software, and engineering under one roof, is a key differentiator for the company.



OVERVIEW

GISFY PRIVATE LIMITED is a consulting organization incorporated in 2016. We are a Government of India recognized start-up. We work across the world and provide services and solutions in the following areas of work.

Website Development
Android and Apple Mobile App Development
Geospatial mapping and Data Development
Mobile Based Survey Solution
GIS and ICT Platforms (web and mobile)
Monitoring and Evaluation
Internet of Things
Documentation & Knowledge Management

TEAM & STRENGTH

GISFY is founded by highly motivated individuals with successful techno-commercial experience of around 20 years.

GISFY has Team of dedicated 25+ experienced developers working from Noida and Hyderabad office to deliver best in class software solutions for our national and international clients.

We work across Insurance, Agriculture, Sustainable Energy, Integrated Water Resource Management, Water and Sanitation, Natural Resources Management, and Disaster & Climate Risk Reduction sectors.





MOBILE GIS & SURVEY SOLUTIONS

Following are salient features of our MOBILE GIS Solutions.

- Collect current location using GPS.
- NO SIM required for Survey. Works in location where there is no mobile network.
- Survey can be done in both the offline and online mode.
- Upload videos, photos to server.
- Chat with peers while doing survey.
- Integrated with Web GIS and Desktop GIS.
- Download survey data.
- Generate and download analysis report based the survey data.
- Secured access.

WEBSITE & WEBGIS

GISFY is expert in developing custom and content management system (CMS) based website using various open source and proprietary technologies for both windows and Unix platform.

GISFY is also expert in developing WebGIS solution in both open source and ESRI technologies with following capabilities.

- Supports Google map, Bing map, Yahoo maps and Open Street Map as base layer.
- All common GIS functionality like PAN, Zoom In, Zoom Out, and Info Tool is available in the application.
- Supports data download in the form of Image, MS Excel, CSV, PDF and MS Word.
- Data can be queried by attribute and geometry.
- Perform various geospatial analysis at ease.



EGOVERNANCE SOLUTION

Asset Management System (AMS): AMS describes spatial locations of all kinds of physical assets and IT assets which include the height of the building. Our integrated efforts of collecting data through Mobile App and hoisting data on Map and WEB platforms makes customers hassle-free solution and streamline their Asset Management operations. Please look at the attached flyer to know more about AMS.

Unauthorized Construction Identification and Management System (UCIMS): UCIMS describes Unauthorized Construction layouts and assets against government-specified norms which helps the Government to identify encroachments, Property tax defaulters and avoid building collapse during natural disasters. Please look at the attached flyer to know more about UCIMS.

Hydromet Information System (HIS): HIS provides secure web-page for users to view their hydromet data graphically, on a map or in tabular and report forms. It also enables meteorology and environmental staff to monitor the readings of Air, Temperatures, Rainfall, flood and other parameters across different automated weather stations to avoid natural disasters and manage ecological balance.

PROJECTS AND PRODUCTS

Project	Description	Client
UCIMS	UCIMS allows the government to identify unauthorized construction layouts and assets against government specified norms which helps Government to identify encroachments, property tax defaulters and avoid building collapse during natural disasters.	Directorate of Town and Country Planning, AP http://dtcp.ap.gov.in/dtcpweb/index.html
Asset Management System	We at GISFY (http://www.gisfy.co.in/) made GIS-based “Asset Management System” product describes about spatial locations of all kinds of physical assets and IT assets which includes the height of the building. Our integrated efforts of collecting data through Mobile App and hoisting data on Map and WEB platforms makes customers hassle-free solution and streamline their Asset Management operations.	Municipal Corporation all over India
India Water Tool	Allows user to analysis groundwater and surface water situation at any particular location	World Business Council of Sustainable Development (https://www.wbcsd.org/Overview/About-us/India)
Hydromet Information System	Import and view automated weather station data in the maps, charts and graphs.	Innovative Hydrology (https://innovativehydrology.com/)
BNSDI	Build data ware house of various maps of Belize government that can be shared and used between government departments.	Belize Social Investment Fund (http://sifbelize.org/)
NatCatDAX	Allows user to manage and improve insurance portfolio by filling the gaps in insurance data.	Institute of Catastrophe Risk Management, Nanyang Technology University (https://icrm.ntu.edu.sg/Research/Pages/NatCatDAX_Program.aspx)
Climate Data Portal	Website for hosting climate data and the state of the Caribbean climate 2017 report.	University of West Indies Mona (https://www.mona.uwi.edu/)

iSenseBot	Internet of Things based product to facilitate cold storage managers to keep track on environment conditions in cold storage.	www.iSenseBot.com
Oxfam Emergency and Humanitarian Operation	This projects is complete suite of Android app and WebGIS application developed for aiding humanitarian operation post disaster.	Third party development for Oxfam India (https://donate.oxfamindia.org)
UNDP Project Portfolio	This is WebGIS based application that allows UNDP executive to view information on mouse hover over the map about the various projects running across India at various location for different SDG (Sustainable Development) goals. It allows user to filter information by State, SDG Goals, and Projects.	Third party application development for UNDP India (http://www.in.undp.org/)
Jal Sanchayan	Jal Sanchayan is a user-friendly android mobile application comprises all components of rainwater harvesting in single platform. It allows user to know from location conditions and interactive module enable user to calculate potential rainwater to be harvested in user's location. In addition, it also provide schematic designs, benefits and operation and maintenance aspects.	Third party application development for CGWB India
Mera Bhujal	Mera Bhujal is a user-friendly android mobile application comprises all components of ground water single platform. It allows user to view the ground water quantity and quality in their current or preferred location. It also allows user to know how much further water can be withdrawn from his land based on the area and local condition.	Third party application development for CGWB India
National Biodiversity Report 6	National biodiversity report website allows government of India to collect biodiversity information from various stake holders across India and generate the National Biodiversity.	Third party application development for UNDP India (http://www.in.undp.org/)



**NANYANG
TECHNOLOGICAL
UNIVERSITY**
SINGAPORE



innovative
HYDROLOGY



wbcscd



సంఘాలకులు, పట్టణమరియు గ్రామీణప్రణాళికా శాఖ
DIRECTORATE OF TOWN & COUNTRY PLANNING

GOVERNMENT OF ANDHRA PRADESH

Type	Skills
Programming Languages	Microsoft Asp.net MVC, PHP, Drupal, Python, C#. Net, ASP.net, WPF, MVC 4.0, WCF, C, C++, WIN32, VC++, MFC, Java, Swings, J2ME, 4GL, Qt Framework, DevExpress
Database	Block chain, MongoDB, MySQL, Oracle8i, MS Access, MS SQL Server, FAME, PostgreSQL Server, DBASE
JavaScript	
GIS Development	Open Layers, Yahoo User Interface library, ExtJS, Google Maps API, Yahoo Maps API, Mapfish, MapWindow API, Quantum GIS, Map Server
Reporting Tools	Jfreechart, Jfreereport, SQL Server Reporting Services (SSRS). Microsoft Reports
Big Data	Hadoop, Block chain,
Business Intelligence	SSIS, SSRS
Internet of Things	Arduino, Raspberry PI
CMS	mojoPortal, Drupal, Joomla, WordPress



REFERENCE

Name	Organization	Contact Information
Deepa Maggo	World Business Counsel of Sustainable Development (WBCSD)	(M) +91-9810964724, (e) maggo@wbcsd.org
Mansi Karla	Nanyang Technology University (NTU)	(M) +65-81932161, (e) mansikalra@ntu.edu.sg
Matt Heggli	Innovative Hydrology	(M) + 1-5307186987, (e) matt.heggli@innovativehydrology.com